



Cello Classic Line Timbre Turntable **Operating Manual**

www.scheu-analogue.com

April 2014

Cello Classic Line Timbre Turntable

Thank you for purchasing the Scheu Analog Cello Classic Line Timbre turntable. Please read these instructions carefully and thoroughly to avoid damages or loss of warranty.



General information

This equipment may only be used in rooms that are not damp. Make no modifications, especially to the electrical components. Unplug from the mains before opening the motor compartment. Any use of rechargeable batteries to run this equipment is at your own risk. If the polarity of the supply voltage is back to front, it will destroy the motor. If the turntable is not in use, disconnect the unit completely from the power supply by removing the plug from the





Cello Classic Line Timbre Turntable Operating Manual

www.scheu-analogue.com

April 2014

socket. Please retain all original packaging. You will need it if your turntable needs to be transported or shipped.

Assembly

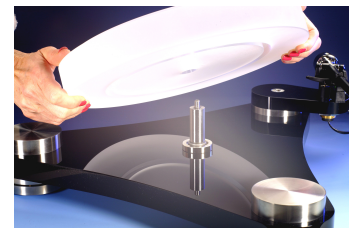
Since this turntable is delivered in a pre-configured state, only very few steps need to be undertaken before playing a record. The turntable weighs approximately 26 kg, so before unpacking and setting up the turntable, make sure that the place where it is to sit is able to handle the weight. First take the base with the bearing and stainless steel feet out of the packaging and place them where they are to be used.



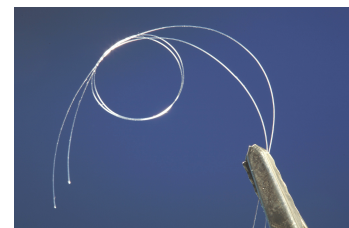
Now remove the sleeve over the bearing and apply some oil from the supplied oil dispenser around the axle of the bearing. Make sure the ceramic ball and the axle are coated with oil, too (picture 2). The bearing sleeves can then be put back on the axle. Since it is an open, inverted bearing, it will be constantly lubricated by capillary action.



The acrylic platter can then be placed carefully over the bearing recess and allowed to glide slowly down the axle, helping it along by rotating it gently. The motor module contains a high-precision DC motor for string drive (using fine nylon thread). Place the motor unit on the slate stand.



Please cut off a piece of thread of sufficient length. The two ends should then be placed together and tied with an ordinary knot. This length is then threaded around the pulley and platter (following the groove on the pulley) and tightened by moving the motor outwards, away from the turntable.



Now the power supply can be plugged into the mains socket on the back of the motor unit. When the three-position switch is in the centre position, the motor is switched off. The left-hand position causes records to play at 33.3 rpm, which can be finely adjusted by means of the left-hand potentiometer. In the right-hand position, a similar adjustment can be made with the right-hand potentiometer for playing at 45 rpm.





Cello Classic Line Timbre Turntable **Operating Manual**

www.scheu-
analogue.com

April 2014

Precise speed can be set with the aid of the supplied stroboscope disc. The disc should be illuminated with a mains-powered lamp (50 Hz) and the speed can then be set with the appropriate potentiometer. The best lamps to use for this are neon or energy-saving fluorescent lamps. These provide for a generally clear image of the strips on the stroboscope disc.



Finally, the tone arm can be fitted onto the matching arm board.

Technical data

Turntable:

- Heavyweight turntable, total weight approx. 26 kg, platter weight 2.7 kg
- Multi-layer wood/slate shell for 9" tonearms
- Inverted precision bearings
- 30 mm acrylic platter
- Armboards for various tone arms available
- dimensions: 450mm x 350mm approx.

Guarantee: 3 years

Includes

- Oil for bearing
- 200 m string
- Stroboscope disc
- White fabric gloves
- Microfibre cleaning cloth

Care and maintenance

Only use the microfibre cleaning cloth to keep your equipment clean. Any cleaning agents may damage the wooden and slate surfaces. The platter can be cleaned using lukewarm water containing washing-up liquid. It should be thoroughly dried afterwards.

Depending on the location in which the equipment is used (presence of household dust, cigarette smoke, etc. in the environment), the bearing should be checked at regular intervals and oiled if necessary. From time to time, it too should be thoroughly cleaned and fresh oil applied. In normal circumstances, it would be sufficient to do this once a year.





Cello Classic Line Timbre Turntable
Operating Manual

www.scheu-analogue.com

April 2014